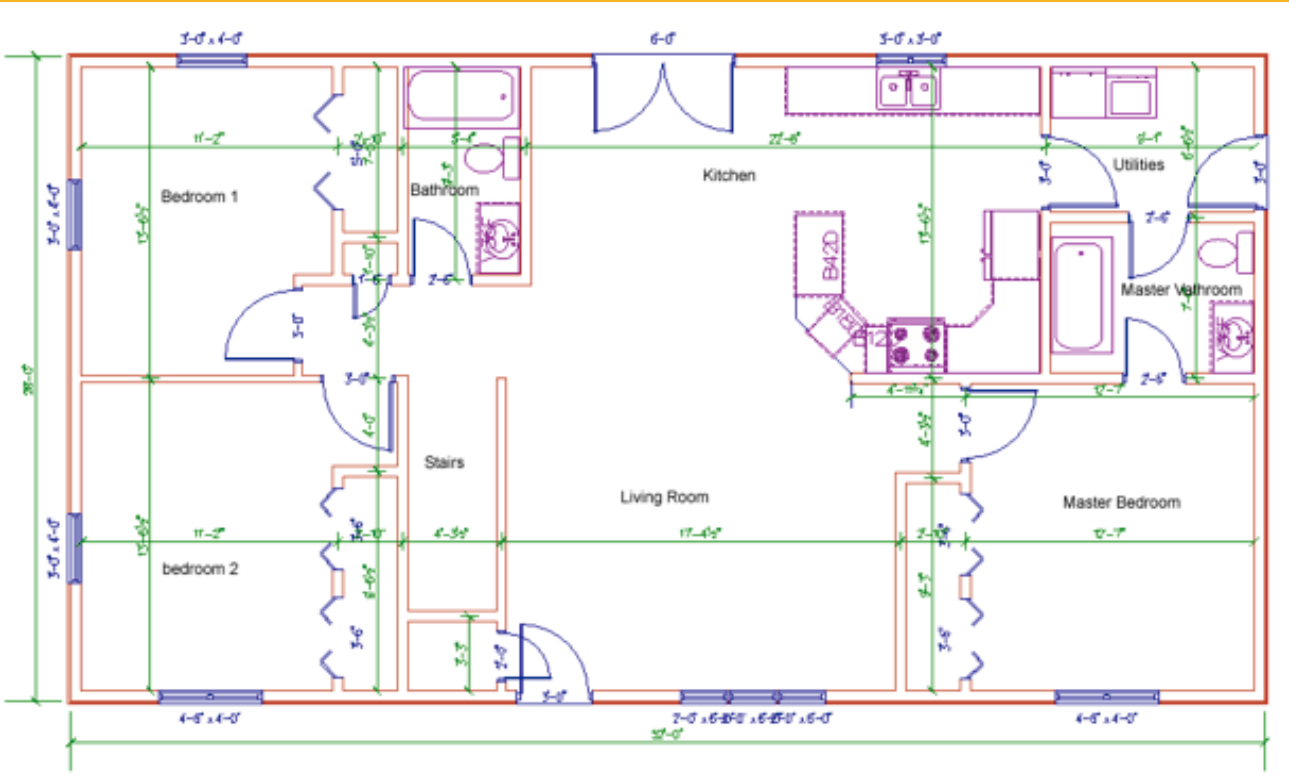


Scale Drawing Day 1

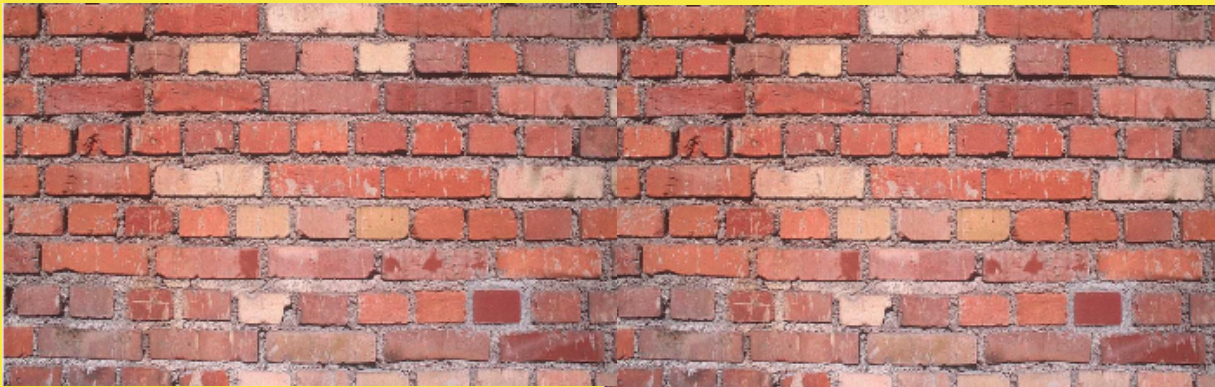
Making a classroom blueprint!



Scale Drawings

1. Read the problem carefully.
2. Set up a proportion using the given information.
3. Check to make sure your labels are lined up!!
4. Solve the proportion.
5. Make sure your answer is labeled properly.

1. A Blueprint using a scale of $\frac{3}{8}$ inch = 6 feet, how many inches represents a 28 foot wall?



28 feet

1. A Blueprint using a scale of $\frac{1}{4}$ inch = 4 feet, how many feet represents a bookcase that is 2.2 inches wide?



Making a classroom blueprint....

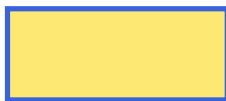
- 1. You and a partner will measure part of the classroom to the nearest half foot. Work with your partner and develop a measuring strategy especially if you are measuring a big object.**
- 2. Double check your measurement because you will be sharing it with the class.**

What is the actual length and width of the bathroom?

Scale

$$\frac{1}{4} \text{ in} = 1 \text{ ft}$$

ANSWER



ft

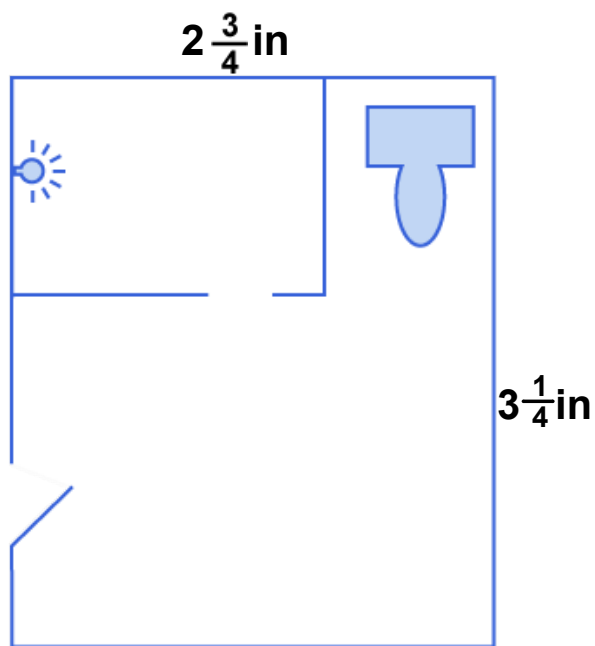
length

ANSWER



ft

width



Scale drawing

The sink is 3 ft by $1\frac{1}{2}$ ft. Choose the correct sink.

ANSWER

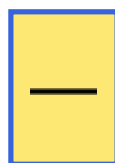
A $2\frac{1}{4}$ ft deep closet has been added.
What is its depth on the scale drawing?

Scale
 $\frac{1}{4}$ in = 1 ft

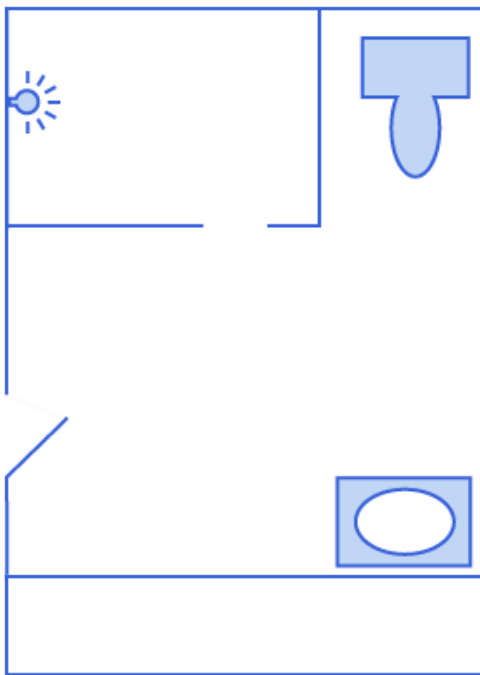
$2\frac{3}{4}$ in

$3\frac{1}{4}$ in

ANSWER



in



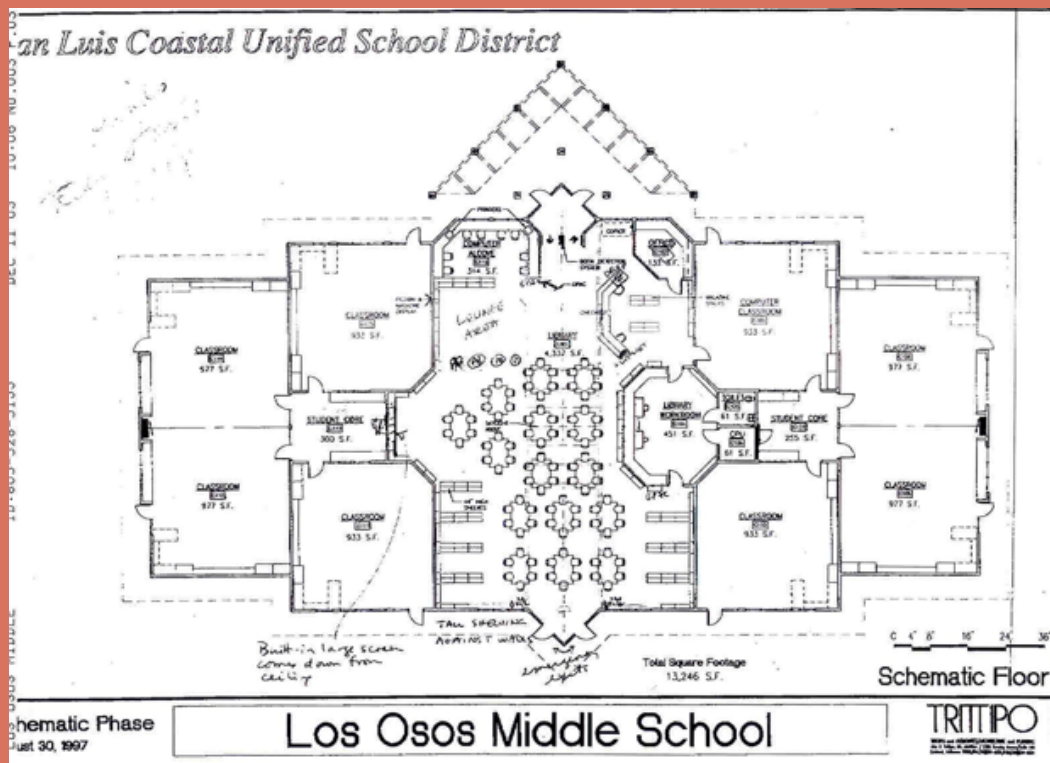
HOMEWORK TIME!

Convert all measurements from class today to inches.

PS- This assignment is REQUIRED for you to complete tomorrow's assignment!

PSS- You will need a RULER in class tomorrow!


Scale Drawing Day 2



Warm-Up

1. A blueprint shows a room is 3 inches by 4.5 inches with a scale of 1.25 inches representing 3.5 feet. What is the length and width of the room in feet?

2. A recipe calls for $\frac{3}{4}$ lb of meat for 2 people. How much meat is needed for 17 people?

 **3. The world-record holder for text messaging sent 159 characters (including spaces) in 25.94 seconds. At this same rate, how many characters could be typed in 66 seconds?**

Making a classroom blueprint

1. Start with the walls. Start drawing walls that meet at 90°. Draw walls first, then fill the room with furniture.

2. Make sure you are using the scale $\frac{1}{4}$ inch = 1 foot.

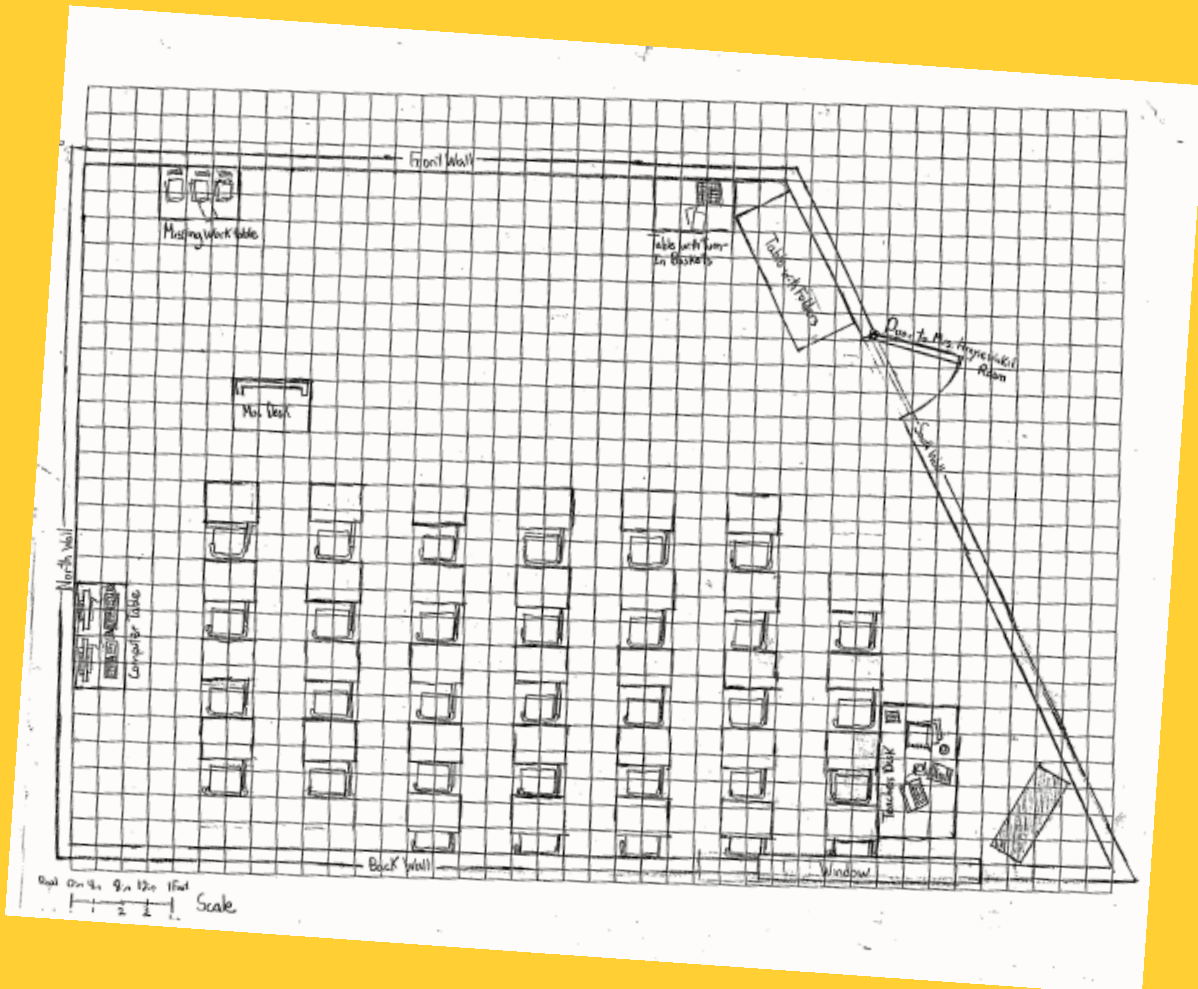
HINT: your graph paper is $\frac{1}{4}$ inch, so how many spaces will make an inch??

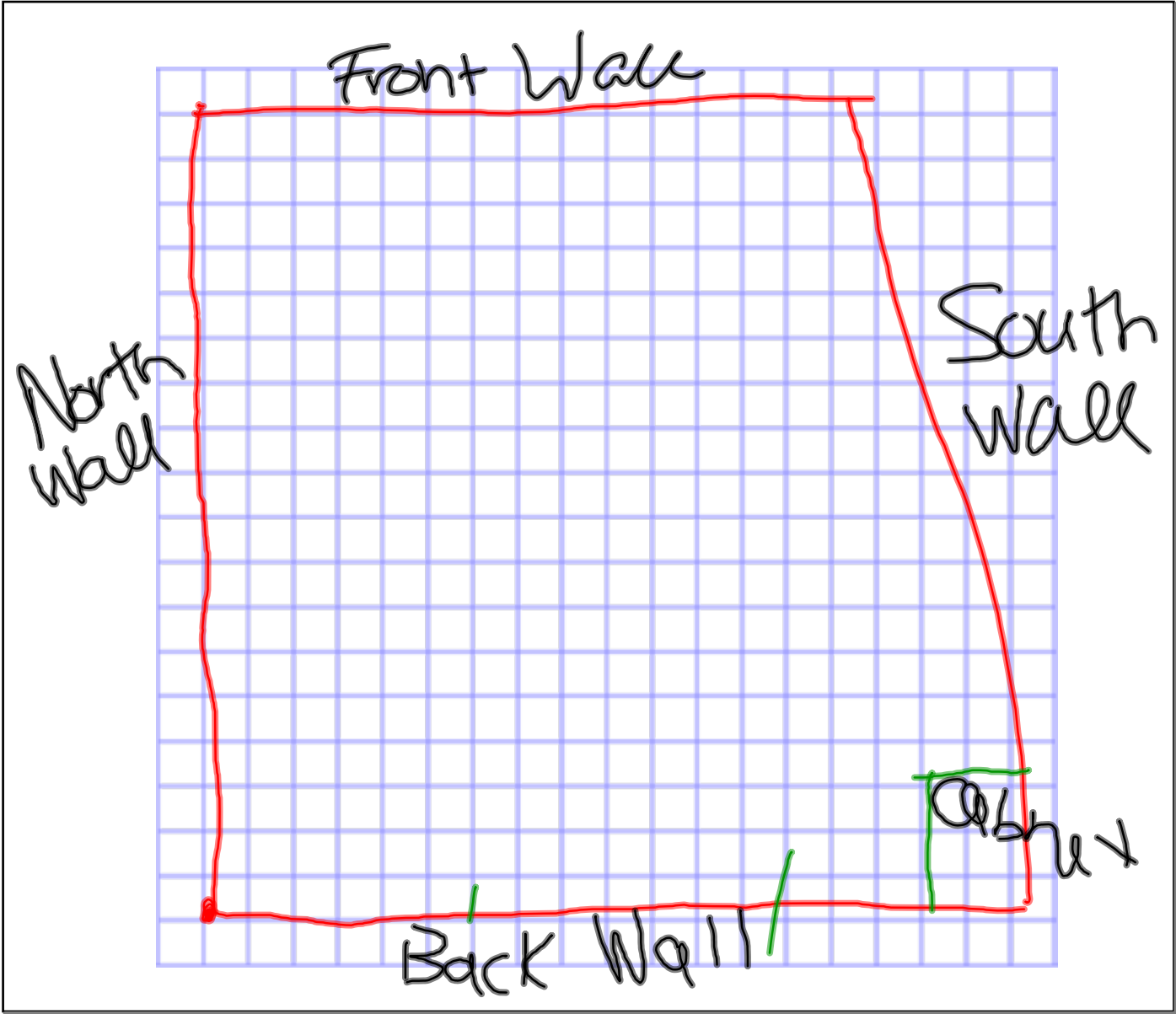


3. Before you leave, make sure you know how many desks there are, how many rows of desks, how many desks are in each row, and have a general idea of where everything is placed in the room.

4. Extra graph paper is on the classroom wiki, just in case you need an extra sheet.

Sample Classroom Blueprint





HOMEWORK TIME!

Make a blueprint of our classroom